

ROGER: Results Oriented Grazing for Ecological Resilience

Group Purpose

Rancher-led collaborative to achieve land management objectives that conserve sagebrush ecosystems and support ranching.

- Develop a shared vision of on-the-ground conditions & create a common understanding of what it will take to achieve those outcomes
- Identify ways to provide ranchers needed flexibility & take action
- Document and share successes, failures, and lessons learned with ROGER and others



Contact Information

Katlyn Mendive, ROGER Coordinator, katlyn@rci-nv.com

Group Function

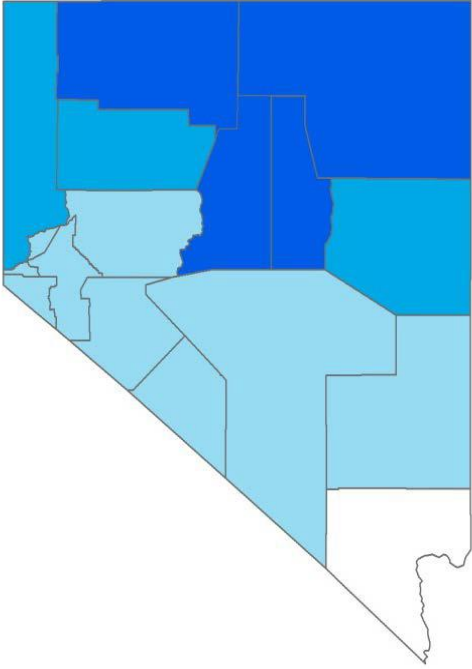
Information, learning and communication venue that supports individuals or groups of individuals experimenting in different ways. ROGER serves to bring various parties together to communicate, share information, ask the hard questions, struggle through disagreements, and learn in order to understand and develop solutions to the complex issues facing the sagebrush ecosystem in Nevada and the Great Basin.



Upcoming Events

- ROGER has three meetings a year the second Tue & Wed of Jan, April, & Oct in Elko and via ZOOM
- We have a 170+ person electronic mailing list with folks from Nevada and neighboring states. Contact Katlyn Mendive if you want to be added.

Service Area



ROGER is an interest-based group working to explore creative and effective options for land management in the sagebrush ecosystem (blue) through implementation of place-based projects. Counties in darker shades of blue have more representation in ROGER than those in lighter shades. The group is actively working to expand.

Partners



Focus Areas

Outcome-Based Grazing (OBG) Demos

- Identify resource objectives & accountability measures; provide ranchers with the means to achieve them through flexible grazing permits.

Adaptive Management Planning

- Identify, test and apply tools and techniques to help guide adaptive grazing management and assess progress.

Assessment & Monitoring

- Explore new ways to assess and monitor rangeland and habitat conditions by obtaining accurate and precise measurements at the site-specific and landscape-scale through timely and cost-effective means.

Wildfire Management

- Explore issues such as targeted grazing, post-fire rehabilitation and grazing management, and engagement of ranchers and local volunteers in wildfire suppression.



Significant Achievements

Outcome-Based Grazing (OBG) Demos

- Four of the five Nevada BLM National OBG demos are represented within ROGER, plus one from Oregon. Two OBG permits completed; three others completed in 2021.

Adaptive Management Planning

- A number of ROGER ranchers are experimenting with the use of the Grazing Response Index (GRI) as an adaptive management planning tool.

5-Year Evaluation and Future Planning Effort

- A 5-year evaluation and future planning effort was completed by the ROGER working group to assess the past, current, and future work of the group.

Assessment and Monitoring

- ROGER has convened a science team that is continuing to explore the use of Remote Sensing (RS), Threat-Based Modeling and Vegetation Mapping to assess and monitor rangeland health and sage grouse habitat – and serve as a conservation planning tool. This team was awarded \$700,000 by BLM and FWS to complete the initial phases of this project

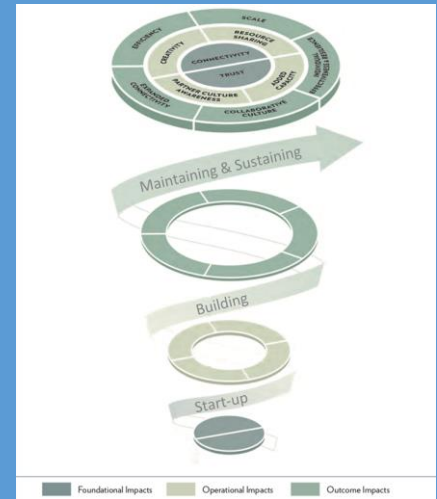
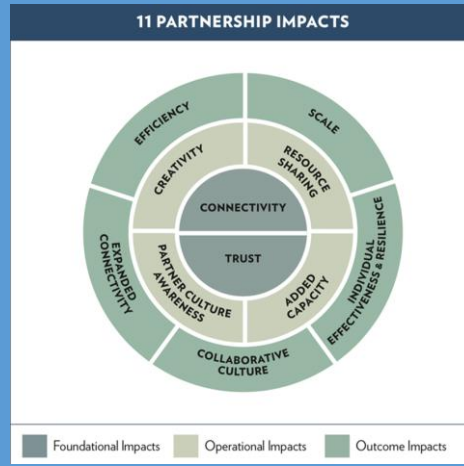
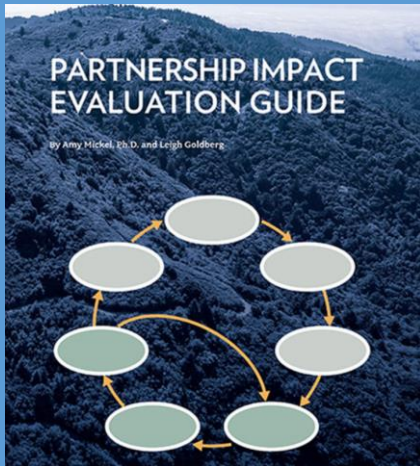
Wildfire Management



Targeted Grazing Demo

The Targeted Grazing for Fine Fuels Demo is ongoing, and continues to halt fires as shown in this Boulder Creek Fire from July 16, 2018 which was held at 1,028 acres.

Future Goals



Evaluation & Succession Planning

- ROGER was recently awarded about \$150,000 from IWJV, BLM and FWS for coordination assistance starting fall 2020. The group is focused on identifying and communicating ROGER's accomplishments to date, charting their future course and refining the coordinator's scope of work.

Maintain & Expand Group

- Work to expand participation from ranchers/interest groups, broadly share information and lessons learned, and build local capacity to move ROGER and similar collaborative community-based conservation efforts forward in NV.
- One part of expanding the group is both continuing and increasing the support from the Governor's Office to engage more participants and encourage regular involvement.

Continued Progress on Four Focus Areas

Resource Needs



SHORT-TERM: Encourage ongoing and increased support from the Governor's Office, Senator Cortez Masto's Office and Congressman Amodei's Office.

ONGOING: Continued support, participation and commitment from all parties.

